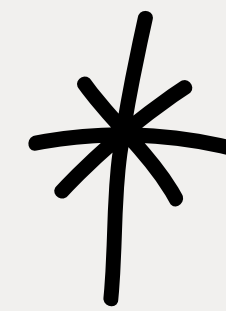


# Sociology learning journey



Your study of sociology will broaden your awareness of society and help you to become responsible agents for change in the world. The curriculum exposes you to a wide range of topics relevant to your own life and helps you distinguish between fact and opinion. It challenges you to look beyond appearances and set aside your own personal beliefs to enable you to grow in compassion and kindness. The experience will leave you with a more tolerant and empathetic understanding of contemporary society.

## BEYOND RODILLIAN

Lawyer

Social  
work

Journalism

Psychologist

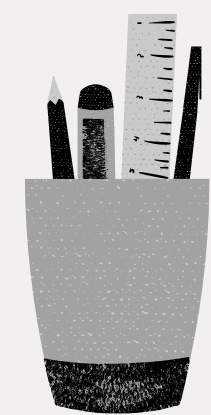
Teaching

Marketing

Further  
study

... anything  
you put your  
mind to!

## A LEVEL



Year  
13

Crime and Deviance

An in-depth study into crime in the UK with a particular focus on the social distribution of crime (by ethnicity, gender and social class) and sociological explanations for these patterns.

Beliefs in Society

An analysis of ideology, science and religion in society including consideration of religious beliefs and practices, types of religious organisations and the significance of religion in contemporary society.

Revision

Examination preparation including revision of all content in the A Level course and opportunity to refine examination technique

Families and  
Households

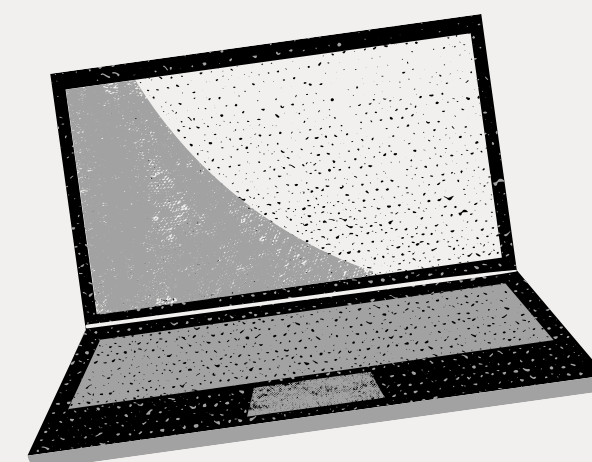
A sociological analysis of the role of the family in society. Includes consideration of changing patterns of marriage, family diversity, childhood and gender roles within the family.

Education

A consideration of the role of education in contemporary society, including a critical analysis of the relationships and processes in schools that can impact the achievement of different social groups.

Theory and Methods

An introduction to key sociological perspectives (such as functionalism, Marxism and feminism) which will be applied to topics throughout the course. Includes an examination of different research methods in sociology.



Year  
12

Crime and Deviance

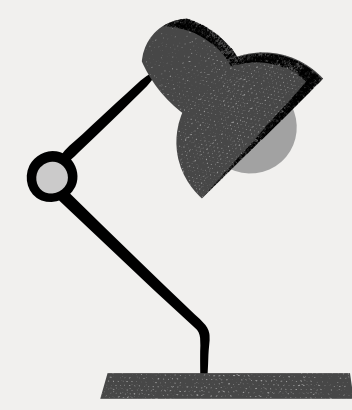
An exploration of methods of social control in the UK as well as explanations for patterns of crime according to social group (social class, ethnicity, gender and age) and the impact of the media on crime.

Social Stratification

An analysis of inequality in the UK including the life chances different social groups have, poverty in the UK and the impact of power, politics and authority on social stratification.

Revision

Examination preparation including revision of all content in the GCSE course and opportunity to refine examination technique.



Paper  
2

Education

Consideration of the different roles education plays in society. This will include explaining processes in school such as labelling, and the differences in educational achievement by social group.

The Family

Sociological explanations of the functions of the family in contemporary society. This will include consideration of relationships and roles in the family, family diversity and the dark side of the family.

Introduction to  
Sociology

An introduction to key sociological concepts such as socialisation, culture, norms and values. You will identify the key sociological theories and their perspective on society. Includes an introduction to research methods in sociology.



GCSE  
Paper  
1

